

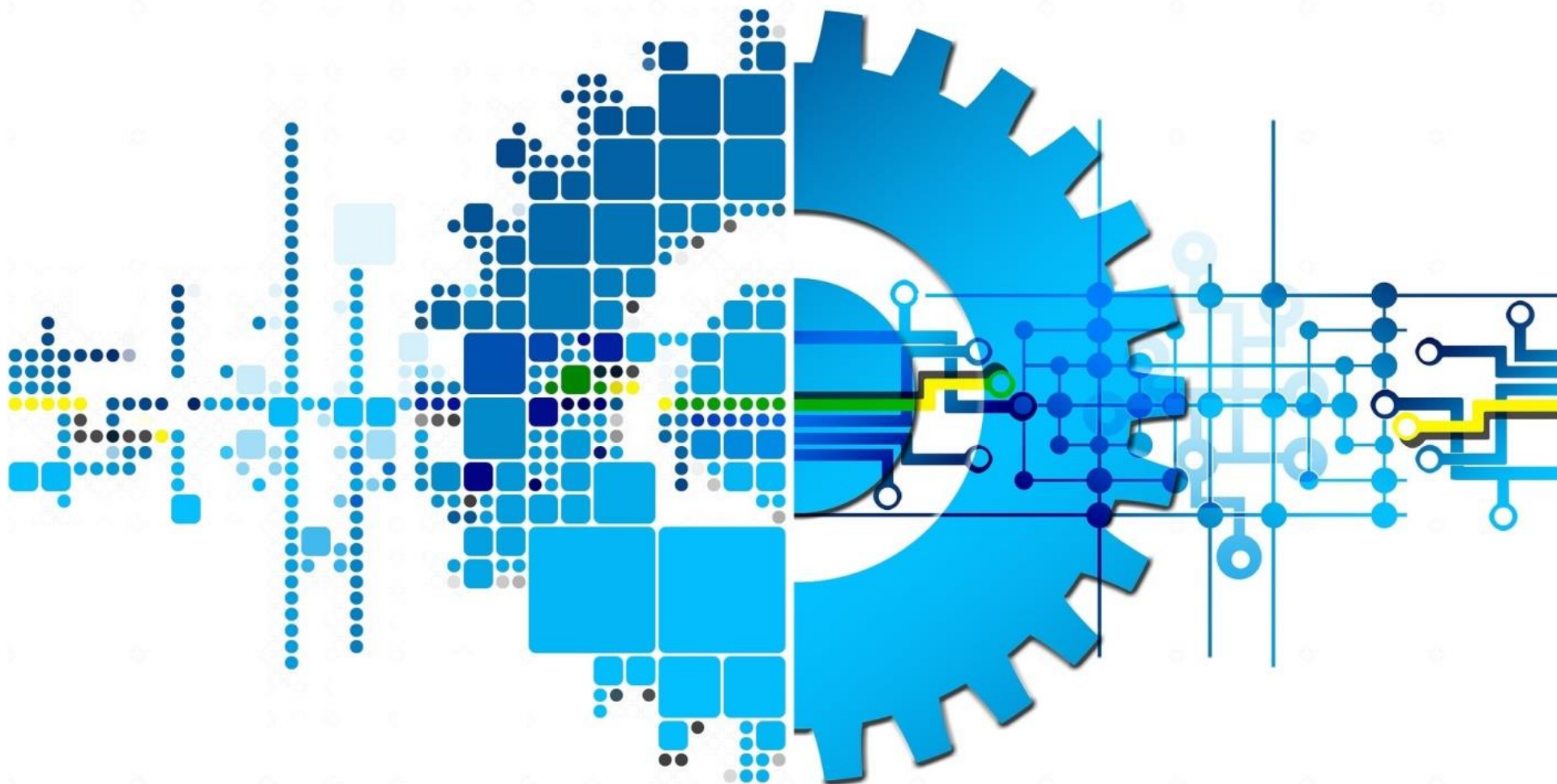
# SBF RISE PROGRAMME

## SNEF

SINGAPORE NATIONAL EMPLOYERS FEDERATION

*Responsible Employers, Sustainable Business*

**SINGAPORE  
BUSINESS  
FEDERATION**  
Apex Business Chamber



# What is SBF RISE PROGRAMME about?

## A. OBJECTIVE

SNEF is proud to be partnering SBF in the **Rising in Support of Enterprises (RISE)** Programme to help businesses tide over the challenges arising from COVID-19, push on with transformation efforts and emerge stronger. This comprises a \$2.5 million fund set up with the support of the government's SG Together Enhancing Enterprise Resilience (STEER) programme, through which Enterprise Singapore will match \$1 for every \$2 contributed by SBF.

The SBF RISE Programme aims to help SBF members, particularly small- and medium-sized enterprises (SMEs), build up their capabilities, digitalise and grow by making it more affordable for them to participate in capacity-building, growth and internationalisation programmes.

Eligible SBF members may apply for a **one-time support of up to \$500**, which can help to offset the costs of a wide range of qualifying activities conducted by SBF, its programme partners, and participating trade associations and chambers (TACs).

The SBF RISE Programme is available from 1 July 2020 to 31 December 2021, or until the Fund is exhausted, whichever is earlier. The 18-month period provides SMEs with adequate time to relook at their strategies and processes, and to decide on suitable courses and events that meet their business objectives.



## B. ELIGIBILITY

To be eligible for RISE support, the company must satisfy the following conditions:

- 1) Be an SBF member
- 2) Have a paid-up capital not exceeding S\$5 million
- 3) Paid up its subscription fees up till and including the current membership year
- 4) Have not received any previous support from the Programme

## C. QUALIFYING ACTIVITIES

There is a wide range of qualifying activities that help SBF members to position their businesses for business growth through and beyond the COVID-19 crisis and to continue their capability upgrading efforts. These activities are indicated in the websites of SBF, its programme partners and participating TACs as either "Business Growth" or "Capability Upgrading" programmes that qualify for RISE support. More than 400 activities will be made available eventually and the number of activities will be increased as the Government's COVID-19 measures are adjusted for Singapore to resume activities safely. [More information on SNEF's qualifying activities can be found in the next page of this collateral.](#)

## D. APPLYING FOR RISE & HELP

- For more details on the application process and other questions, we have linked the [Frequently Asked Questions](#) specially for you over here.
- Please email to [mr@sbf.org.sg](mailto:mr@sbf.org.sg) if more information is required on the RISE programme.
- For enquiries on applications that have been submitted, please contact the RISE Programme Administrator at [SBFRise@sbf.org.sg](mailto:SBFRise@sbf.org.sg)
- We would gladly answer any enquiries you may have regarding qualifying activities by SNEF. Kindly drop us an email at [trg@snef.org.sg](mailto:trg@snef.org.sg)

JOINTLY OFFERED  
TO YOU BY:



# QUALIFYING ACTIVITIES BY SNEF



**NEED HELP?**

**Training Hotline**  
6827 6927

**Training E-mail**  
trg@snef.org.sg  
onlinelearning@snef.org.sg

BUSINESS GROWTH	
Course Title	Schedule
Focus & Execute in Uncertainty (Online)	23 Apr
Growth-Mindset Mentoring Leadership	21-22 Jan, 25-26 Mar, 24-25 May

CAPABILITY UPGRADING	
Course Title	Schedule
Accelerated Learning and Development in COVID 19 using AI and Data Science (Online)	24 Dec
Best Practices for Responsible Exit Management (Online)	14 Dec
Driving a Successful Flexi Work Arrangement (FWA) as Managers (Online)	Please call 6827 6927 for more information
Employment Advisories and Practices during Covid-19 (Online)	Please call 6827 6927 for more information
Extraordinary Productivity in Turbulent Times (Online)	4 Feb
Fair Grievance Handling (Online)	8 Dec
Implement Flexible Wage System	14 Dec, 18 Jan, 10 Mar, 17 May 18 Dec, 19 Feb, 16 Apr
Inspiring Trust Through Tough Times (Online)	27 Apr
Keys to Instant Rapport (Online)	11 Dec, 18 Mar, 30 Jun
Lead Your Remote Team Effectively (Online)	14 Dec, 14 Jan, 10 Jun
Managing Harassment in the Workplace (Online)	Please call 6827 6927 for more information
Managing Performance during Covid-19: Policies, Practices, Challenges and Opportunities (Online)	11 Dec
Maximizing Performance Through Coaching	19-20 Jan, 20-21 Apr
Navigating Change & Uncertainty through The 7 Habits (Online)	9 Dec, 19 Feb
Practical Implementation of Personal Data Protection Act	20 Jan, 25 Feb, 30 Mar, 21 Apr, 21 May, 18 Jun
Secrets Of Written Persuasion	15 Jan, 8 Apr, 14 Jul 10 Dec, 24 Feb, 12 May, 13 Aug
Training Needs Analysis – A Practical Approach Using ACTION Model (Online)	11 Dec, 29 Jan, 25 Feb, 24 Mar, 28 Apr, 31 May



## HOW TO PARTICIPATE ???

1. Download Registration Form found [HERE](#)
2. Complete Registration Form
3. Forward completed Registration Form to [trg@snef.org.sg](mailto:trg@snef.org.sg)
4. Programme Manager will confirm if application is successful